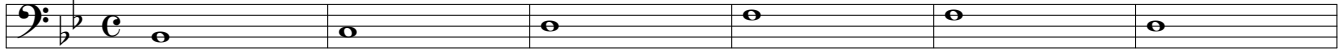


Understanding

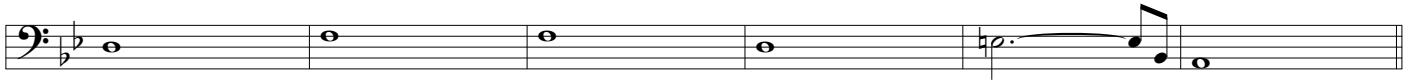
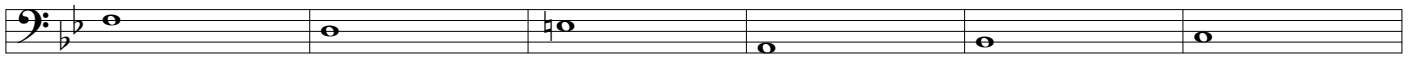
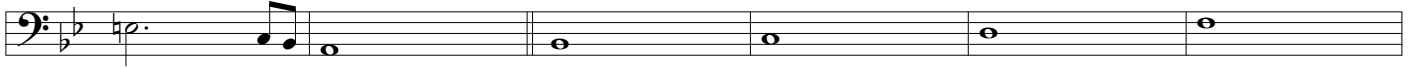
Downloaded from
bobsbasslines.com

Judie Tzuke

A - Intro



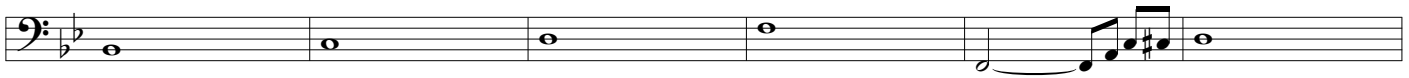
B - Verse



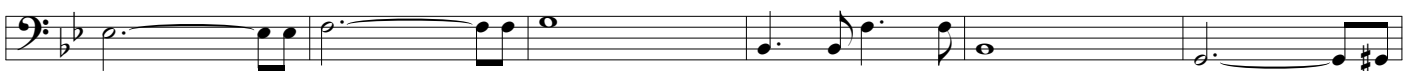
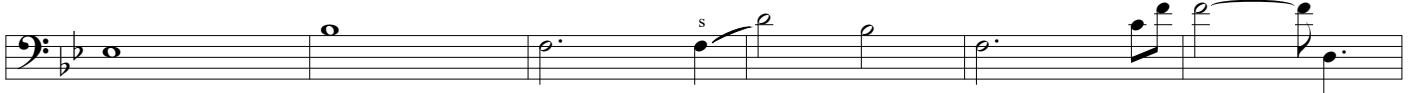
C - Chorus



D - Verse



E - Chorus



Understanding

Musical score for 'Understanding' in bass clef, 3/4 time, key of B-flat major. The score consists of eight staves. The first staff begins with a half note G2, followed by quarter notes A2, B2, and C3. The second staff has a half note G2, quarter notes A2, B2, and C3, and a whole note G2. The third staff starts with a whole note G2, followed by quarter notes A2, B2, and C3, then quarter notes D3, E3, and F3, and ends with a triplet of quarter notes G3, A3, and B3. The fourth staff begins with a half note G2, followed by quarter notes A2, B2, and C3, then quarter notes D3, E3, and F3, and ends with quarter notes G3, A3, and B3. The fifth staff starts with a half note G2, followed by quarter notes A2, B2, and C3, then quarter notes D3, E3, and F3, and ends with quarter notes G3, A3, and B3. The sixth staff begins with a half note G2, followed by quarter notes A2, B2, and C3, then quarter notes D3, E3, and F3, and ends with quarter notes G3, A3, and B3. The seventh staff starts with a half note G2, followed by quarter notes A2, B2, and C3, then quarter notes D3, E3, and F3, and ends with quarter notes G3, A3, and B3. The eighth staff begins with a half note G2, followed by quarter notes A2, B2, and C3, and ends with a whole note G2. Performance markings include 'F - Outro' above the second staff, 'Sva' above the fifth and seventh staves, 'fade...' below the sixth staff, and '...silence' below the eighth staff. A triplet of quarter notes is marked with a '3' above it, and a half note is marked with an 'h' above it.