

# The Sun Always Shines On TV

Downloaded from  
bobsbasslines.com

Aha

Fade in 8 Intro 8 Vs 1 25 Band in

44

48

52

56

60 Vs 2

64

67 Vs 3

71

74

77 Chorus

81

85 3

89

Detailed description: This image shows the bass line for the song 'The Sun Always Shines On TV'. The notation is in 4/4 time and begins with a 4-measure 'Fade in' section, followed by an 8-measure 'Intro'. The main body of the piece starts at measure 25 with the label 'Vs 1'. The bass line consists of a series of eighth-note patterns, including a prominent triplet of eighth notes in measure 85. The piece concludes at measure 89.

93



97

Vs 4



101



104



111

Chorus



116



120



124



128

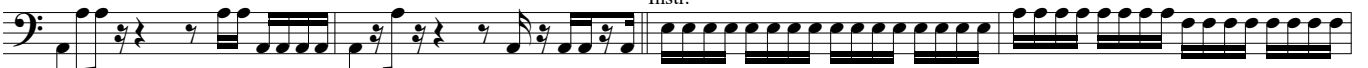


132



136

Instr.



140



144

Cho.



148



152



156



160

