

# Mystery Song

Status Quo

10

14

18

22

26

30

34

38

42

46

50

54

58

Vs.

Guit solo

Detailed description: This image shows the bass line for the song 'Mystery Song' by Status Quo. The music is written in 4/4 time and begins with a 4-measure rest. The key signature has one sharp (F#). The bass line consists of 58 measures, divided into 12 systems of five measures each. The notation includes various rhythmic patterns such as eighth notes, quarter notes, and sixteenth notes, often beamed together. There are two 'Vs.' (Verse) markings above the staff at measures 18 and 34. A 'Guit solo' marking is placed above the staff at measure 50. The piece concludes with a final cadence in the 58th measure.

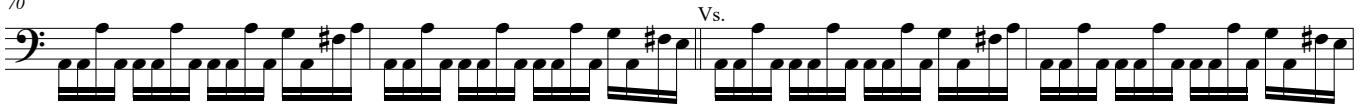
62



66



70



74



77



81



85



*fade...*

89



*...silent*