

Kateira Island

(Road Noise version)

Downloaded from
bobsbasslines.com

Judie Tzuke

8^{va}-----

9

16 Vs.

24

31 8^{va}-----

39

46 bridge

55 8^{va}----- synth solo

62

68 cho.

75

83 8^{va}----- H H H H
5 5 5 5 Vs.

90

97

Detailed description: This is a bass line score for the song 'Kateira Island (Road Noise version)'. The score is written in bass clef with a key signature of one sharp (F#) and a 4/4 time signature. It consists of 11 staves of music. The first staff (measures 1-8) features an 8va octave marking. The second staff (measures 9-15) continues the melody. The third staff (measures 16-23) is marked 'Vs.' and includes a whole rest. The fourth staff (measures 24-30) continues the melody. The fifth staff (measures 31-38) features an 8va octave marking. The sixth staff (measures 39-45) continues the melody. The seventh staff (measures 46-54) is marked 'bridge' and contains chords. The eighth staff (measures 55-61) is marked 'synth solo' and features an 8va octave marking. The ninth staff (measures 62-67) continues the melody. The tenth staff (measures 68-74) is marked 'cho.' and includes a triplet. The eleventh staff (measures 75-82) continues the melody. The twelfth staff (measures 83-89) features an 8va octave marking and a 'Vs.' section with a whole rest. The thirteenth staff (measures 90-96) continues the melody. The final staff (measures 97-104) concludes the piece with a triplet.

105



111



118

H H H H
5 5 5 5

bass solo

rubato...

123



127

8va



132

(8va)



137



144



152



157

8va

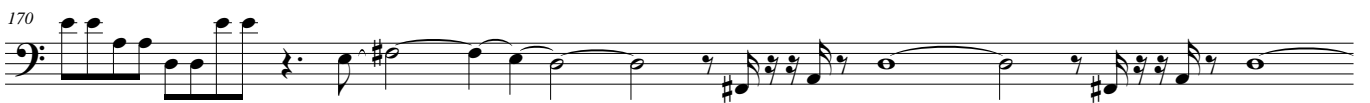


163

sl.



170



177

guit. solo

a tempo



