

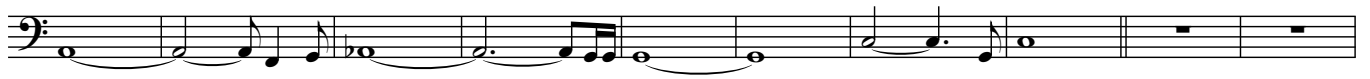
Jump

Downloaded from
bobsbasslines.com

Van Halen

The image displays the bass line for the song "Jump" by Van Halen, written in 4/4 time. The music is presented in a single staff with a bass clef. The key signature is one flat (B-flat major or D minor). The piece begins with a series of rests, followed by a melodic phrase starting on the second measure. The bass line is characterized by a mix of eighth and sixteenth notes, often beamed together in groups. There are several double bar lines throughout the score, indicating the end of phrases or measures. Measure numbers 10, 16, 22, 28, 34, 41, 47, 53, 59, 66, 72, 78, and 84 are clearly marked at the beginning of their respective lines. The notation includes various rhythmic values, including eighth notes, sixteenth notes, and quarter notes, some with stems pointing up and some pointing down. The piece concludes with a final melodic phrase and a whole note chord.

93



103



111



117



123



rpt. to fade