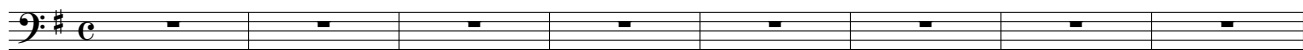


Enter Sandman

Downloaded from
bobsbasslines.com

Metallica



Enter Sandman

64

71

78

84

91

98

105

112

118

124

Detailed description: This image shows a page of musical notation for the bass line of the song "Enter Sandman". The music is written in bass clef with a key signature of one sharp (F#) and a time signature of 4/4. The notation consists of ten staves, each representing a measure range. The first staff (measures 64-70) features a mix of eighth and quarter notes with some slurs. The second staff (measures 71-77) includes a measure with a whole rest. The third staff (measures 78-83) shows a change in key signature to two sharps (F# and C#) at measure 78. The fourth staff (measures 84-90) is a continuous eighth-note pattern. The fifth staff (measures 91-97) returns to the one-sharp key signature and features a mix of note values. The sixth staff (measures 98-104) continues with eighth-note patterns. The seventh staff (measures 105-111) includes a measure with a whole rest. The eighth staff (measures 112-117) features a mix of eighth and quarter notes. The ninth staff (measures 118-123) is a continuous eighth-note pattern. The tenth staff (measures 124-129) ends with a double bar line and repeat dots.